

From: Mason Fitzgerald, Director of Planning and Performance

To: Council of Governors

Date: 24 January 2019

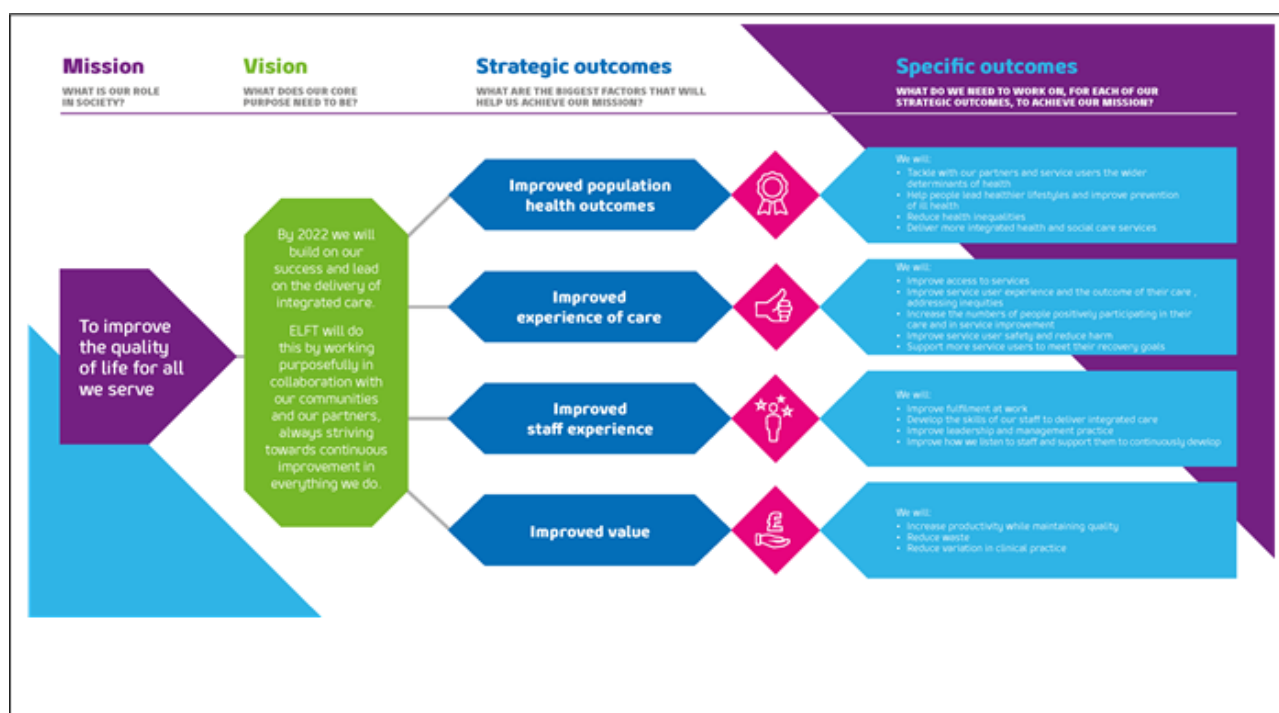
Subject: Strategic Planning Update

Glossary:

ELHCP	East London Health and Care Partnership
STP	Sustainability and Transformation Partnership: NHS and local councils came together in England to develop proposals to improve health and care. They formed new partnerships (STPs) to run services in a more coordinated way, to agree system-wide priorities, and to plan collectively how to improve residents' day-to-day health.
CCG	Clinical Commissioning Group: the clinically-led statutory NHS bodies responsible for the planning and commissioning of health care services for their local area.
WEL	Waltham Forest and East London
BLMK	Bedford, Luton and Milton Keynes
ICS	Integrated Care System: In some areas, an STP will evolve to form an integrated care system, a new type of even closer collaboration. In an integrated care system, NHS organisations, in partnership with local councils and others, take collective responsibility for managing resources, delivering NHS standards, and improving the health of the population they serve.
HWBB	Health and Well Being Board: Established and hosted by local authorities, health and wellbeing boards bring together the NHS, public health, adult social care and children's services, including elected representatives and Local Healthwatch, to plan how best to meet the needs of their local population and tackle local inequalities in health.
NHSE	NHS England
NHSI	NHS Improvement: responsible for overseeing foundation trusts and NHS trusts, as well as independent providers that provide NHS-funded care.
IHI	Institute of Healthcare Improvement: an independent, not-for-profit organisation and ELFT's strategic partners in our Quality Improvement work

1.0 Purpose of the Report

- 1.1 To provide the Council with an update on strategic planning activity in the Trust. The Trust strategy is illustrated below:



2.0 Role of Governors in relation to this item, and key points

- 2.1 The Trust Board has the legal power to approve the Trust's strategic plans. In developing the plans, the Board must have regard for the view of the Council of Governors.
- 2.2 The role of Governors is therefore to engage with the membership and provide feedback to the Trust on the development of the Trust's strategic plans.

3.0 Sustainability & Transformation Partnerships Update

3.1 East London Health & Care Partnership (North East London STP)

The North London Commissioning Alliance continues to embed new commissioning arrangements across north-east London, with a new single Managing Director post appointed across Newham, Tower Hamlets and Waltham Forest CCGs, a new STP Programme Director post, and a new Transformation Director post, supporting the work of the Inner North East London Transformation Board, chaired by Navina Evans.

The ELHCP CEO Group has completed a review of the developing integrated care arrangements in each of the three ELHCP place based partnerships (City & Hackney, Inner North East London, and Barking, Havering & Redbridge), with each of the three partnerships working to develop integrated health and care services around neighbourhoods and closer joint working between commissioners and providers.

The Inner North East London Transformation Board brings together the chief executives of the inner north east London NHS providers, councils and the North

East London Commissioning Alliance executive to manage a programme of transformation at scale. The programme is under development and will be finalised in January 2019.

3.2 Bedford, Luton and Milton Keynes STP (BLMK)

Bedfordshire, Luton and Milton Keynes CCGs continue to embed new commissioning arrangements across BLMK, with a new Joint Executive Team created under the leadership of the new single Accountable Officer, with a Chief Operating Officer in each CCG area.

Work has begun to develop a single operating plan across the BLMK Integrated Care System.

4.0 NHS strategic planning

4.1 The NHS Long term Plan was published on 7 January 2019. The workforce implementation plan will be published later in the year, and a green paper on social care is also yet to be published.

4.2 There will be a presentation at the meeting about the Long Term Plan. The presentation is attached.

5.0 Next steps

5.1 The annual consultation exercise with members will commence. The dates are as follows:

Date	Time	Venue
Monday 4 February 2019	12:30 – 3:00	Tower Hamlets Main Hall, Professional Development Centre, 229 Bethnal Green road, London E2 6AB
Monday 11 February 2019	12:30 – 3:00	City & Hackney Lecture Theatre, Education Centre, St Joseph's Hospice, Mare Street, London E8 4SA
Wednesday 13 February 2019	12:30 – 3:00	Bedfordshire St Andrew's Church, Kimbolton Road, Bedford MK40 2PF
Wednesday 20 February 2019	1:30 – 4:00	Newham Old Town Hall, Stratford, 29 The Broadway, London E15 4BQ
Monday 25 February 2019	12:30 – 3:00	Luton Tokko Youth Centre, 7 Gordon Street, Luton LU1 2QP
Tuesday 12 March 2019	5:00 – 7:00	Trust-Wide Annual Planning Meeting UNISON Centre, 130 Euston Road, London NW1 2AY

- 5.2 The feedback from the consultation will be discussed at the March Council meeting and then submitted to the Trust Board.
- 5.3 We will consider how the Trust and the Council can be effectively engaged in the implementation of the NHS Long Term Plan.

6.0 Action being requested

- 6.1 The Council of Governors is asked to **RECEIVE** and **DISCUSS** the report.