

# OT SCHOOL NOTICE BOARD



JANUARY 2024

## BRINGING OT INTO SCHOOLS

Its been a year since the OT Service for Children introduced our new way to work with schools in Newham.

We would like to say thank you to everyone who has supported us in getting this model up and running. We hope that having OTs available in your schools has made it easier to get answers to some of those questions you have about your pupils.

Please remember to speak to your OTHub team if you have any ideas that will make this year even more successful.



## 2023 THANKYOU

- Thank you RONEC for hosting the Fun with Food parent workshops and staff training! It was amazing to see that all parents and staff are really engaged in talking about different brilliant ideas around messy play with food!
- Thank you, Chobham Academy Primary and Carpenters Primary School, for being so proactive and enthusiastic for accessing our service for staff trainings and parent workshops!
- Thank you to Bobby Moore Primary School for all the teachers that attended our Sensory Processing and Function training! You all came to the training prepared watching our videos on Our Sensory Zone! Well done for all the great reflection and discussion in the training!
- A big thank you to all the schools for working with us this past year to achieve so many things and support our students!

## UNIVERSAL RESOURCES

We have an excellent bank of resources available on our website and YouTube channel which provide strategies and approaches to help with a range of difficulties.

### OT Website -

<https://www.elft.nhs.uk/scyps/ourservices/occupational-therapy>

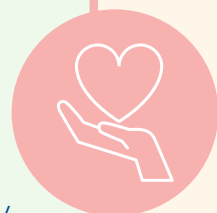
### Youtube Channel -

<https://www.youtube.com/channel/UCK3uhZWJh8SocdtJVIwt9Fg>

### School Hub Line

Tel: 020 8586 6480

Tuesday 8:30am – 10:30am Thursday 3:00pm – 5:00pm



# ANNOUNCEMENTS

Could we ask all staff to remember that the School Hub Contact Line is for your use and should not be given out to parents to contact us.



## VIDEOS OF THE TERM

### Eating with hands video

In this video you can find excellent strategies in how to support your child to eat with their hands.

<https://www.youtube.com/watch?v=87bh2dlt31k&t=29s>

### Sensory detective video

In this video you can learn more about children's sensory preferences and behaviours.

<https://www.youtube.com/watch?v=QQ3TidYKvik&t=3s>



## UPCOMING TRAINING

We will be updating our training package over the school holidays. Please check our website for new dates starting in September.

If you would like bespoke training for your individual school needs. Please talk your hub lead or alternatively call the School Hub Contact Line.

### Training Brochure:

<https://www.elft.nhs.uk/scyps/our-services/occupationaltherapy/working-schools-newham>

We will be producing a noticeboard each term to provide you with useful updates and exciting projects taking place in your area



## Visit our website:

<https://www.elft.nhs.uk/scyps/ourservices/occupational-therapy>

