

OT SCHOOL NOTICE BOARD



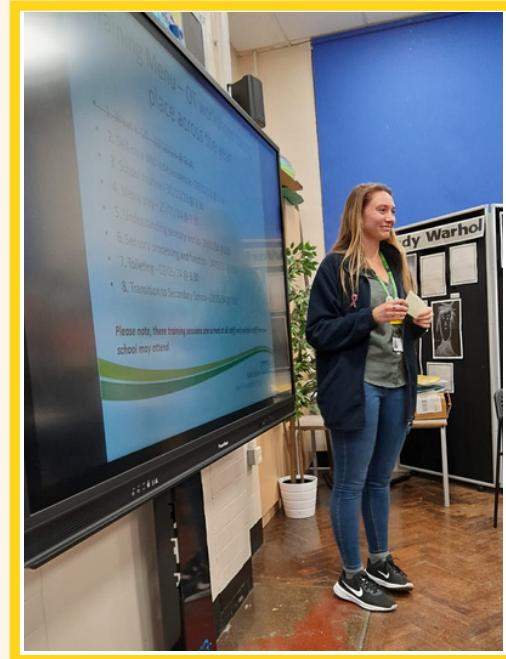
JANUARY 2024

BRINGING OT INTO SCHOOLS

Its been a year since the OT Service for Children introduced our new way to work with schools in Newham.

We would like to say thank you to everyone who has supported us in getting this model up and running. We hope that having OTs available in your schools has made it easier to get answers to some of those questions you have about your pupils.

Please remember to speak to your OTHub team if you have any ideas that will make this year even more successful.



2023 ACCOMPLISHMENTS

- Hub 4 has been busy providing training to school staff on Occupational Therapy and Understanding Sensory Processing. All sessions were well attended, and staff participated in sharing their experiences.
- We are really looking forward to continue supporting students and working with more schools in the coming year!
- A big thank you to all the schools for working with us this past year to achieve so many things and support our students!

UNIVERSAL RESOURCES

We have an excellent bank of resources available on our website and YouTube channel which provide strategies and approaches to help with a range of difficulties.

OT Website -

<https://www.elft.nhs.uk/scyps/ourservices/occupational-therapy>

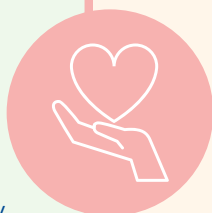
Youtube Channel -

<https://www.youtube.com/channel/UCK3uhZWJh8SocdtJVIwt9Fg>

School Hub Line

Tel: 020 8586 6480

Tuesday 8:30am – 10:30am Thursday 3:00pm – 5:00pm



ANNOUNCEMENTS

Could we ask all staff to remember that the School Hub Contact Line is for your use and should not be given out to parents to contact us.



VIDEOS OF THE TERM

Eating with hands video

In this video you can find excellent strategies in how to support your child to eat with their hands.

<https://www.youtube.com/watch?v=87bh2dlt31k&t=29s>

Sensory detective video

In this video you can learn more about children's sensory preferences and behaviours.

<https://www.youtube.com/watch?v=QQ3TidYKvik&t=3s>



UPCOMING TRAINING

We will be updating our training package over the school holidays. Please check our website for new dates starting in September.

If you would like bespoke training for your individual school needs. Please talk your hub lead or alternatively call the School Hub Contact Line.

Training Brochure:

<https://www.elft.nhs.uk/scyps/our-services/occupationaltherapy/working-schools-newham>

We will be producing a noticeboard each term to provide you with useful updates and exciting projects taking place in your area



Visit our website:

<https://www.elft.nhs.uk/scyps/ourservices/occupational-therapy>

