

ELFT AHP RESEARCH & INNOVATION STRATEGY



Strengthening Allied Health Professional research, innovation, and clinical effectiveness across ELFT

INTRODUCTION

Research and innovation (R&I) is a core component of AHP practice. It encompasses all efforts to evaluate and innovate within ELFT — from gathering and interpreting data about existing services, to testing new ideas, exploring service innovations, and leading formal, larger-scale research.

VISION



To embed research and innovation into everyday AHP practice through curiosity, mentorship, collaboration, and supportive networks.

RESEARCH AND INNOVATION INCLUDES



Audit



Routine outcome measurement



Quality Improvement



Service Evaluation



Research

OUR STRATEGY BUILDS ON NATIONAL GUIDANCE



"Our research & innovation makes a difference."

AHP R&I STRATEGY FOR ENGLAND (2022)
AHP STRATEGY FOR ENGLAND: AHPS DELIVER ELFT AHP STRATEGY (2025)

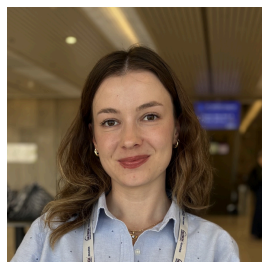
CONTACT & INVOLVEMENT



For information, collaboration, or involvement in AHP R&I work:

AHP R&I Strategic Lead: Catherine Carr – Catherine.Carr6@nhs.net

NIHR Developing Research Leader: Irem Deniz – Irem.Deniz@nhs.net



WHAT WE AIM TO ACHIEVE



CONNECT

Connecting AHPs and services to enable innovation to grow.



CONSOLIDATE

Consolidating learning about R&I within the current AHP workforce.



COMMUNICATE

Building better pathways to communicate opportunities, share practice, and showcase outcomes.



INSPIRE

Nurturing a culture of curiosity and empowering AHPs to be active in R&I.



INNOVATE

Supporting innovation, evaluation; turning evidence into practice and practice into evidence.

HOW WE WILL DO THIS

- 1.1 Connect directly with AHPs in services
- 1.2 Link with Corporate R&I, QI and QA departments
- 1.3 Establish R&I network and infrastructure

- 2.1 Further research capacity mapping
- 2.2 R&I strategy– Trustwide consultation
- 2.3 Support adoption, use, interpretation of routine data

- 3.1 Develop agile communication pathways
- 3.2 Support and showcase innovations
- 3.3 Share routine outcome measures to evidence impact
- 3.4 Communicate priority areas for evaluation

- 4.1 Nurture a culture of curiosity
- 4.2 Empower AHP involvement in R&I at a range of levels
- 4.3 Build R&I capacity
- 4.4 Develop clinical effectiveness champions

- 5.1 Support evidence into practice and practice into evidence
- 5.2 Support service innovation and evaluation
- 5.3 Develop clinical effectiveness forums.

- Team meetings
- Listening workshops
- AHP survey
- Tailored learning
- Shared resources
- Database development
- R&I Bulletin newsletter
- Clinical effectiveness forum
- Research application support (funding, ethics)