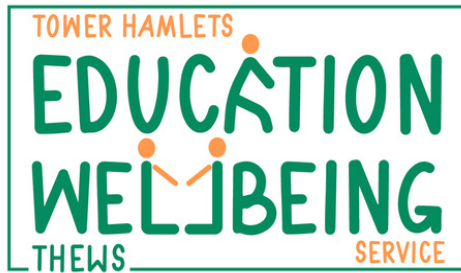
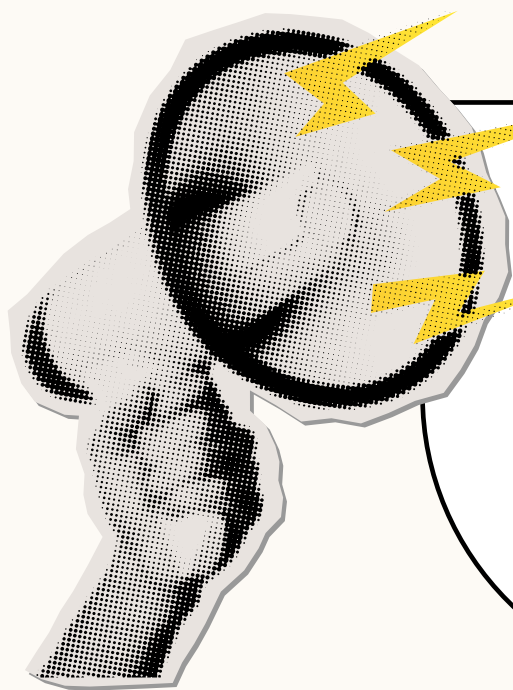


# PARTICIPATION



# GROUP



Are you 16-18 years old?

Have you attended a **THEWS** group or sessions with one of our Education Wellbeing Practitioners?

Join our next meeting  
(23 March)

You're  
**Invited!**

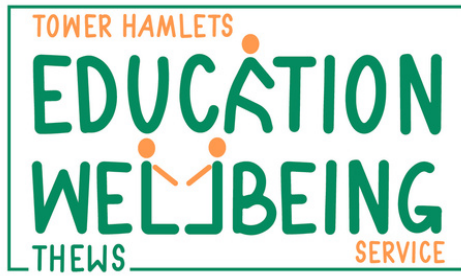
Get a £20 voucher!

Join the THEWS Participation Group, and get a £20 voucher for each time you attend

Swipe to find out more, including how to sign up.



# PARTICIPATION



# GROUP

Meet people with similar experiences

£20 voucher each time you attend

Try new things - like workshops, training, decision making

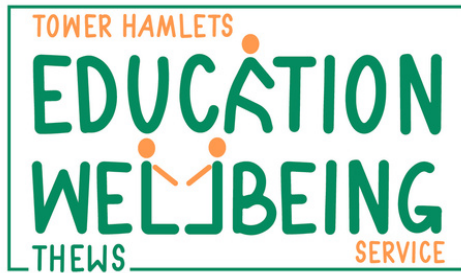
Give feedback about your experience with THEWS

Share your ideas - what would improve your school's approach to positive mental health?

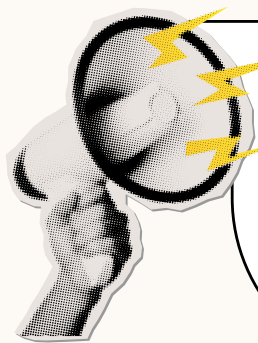
Meetings take place **online**, every couple of months



# PARTICIPATION



# GROUP



Our next meetings are on:

Monday 23 March 2026

Monday 1 June 2026

Want to join?



Sign up  
here!



<https://shorturl.at/X13ys>



If you'd like to get in touch, or have any questions, you can email us:

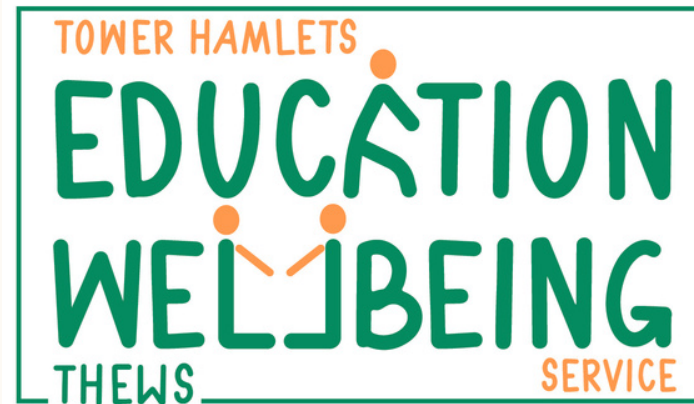


[elft.thews.participation@nhs.net](mailto:elft.thews.participation@nhs.net)

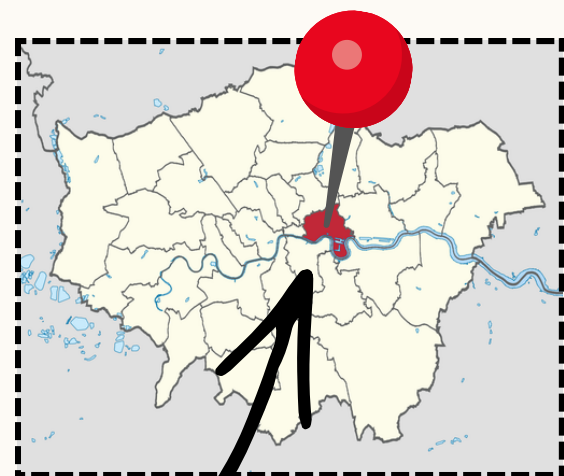
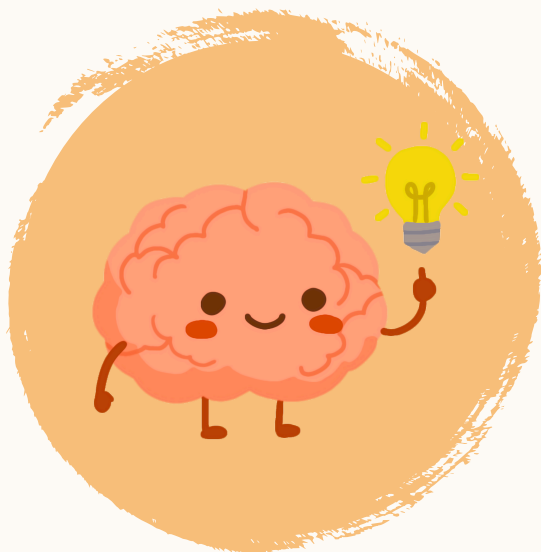


Hi there!

Thank you for viewing this post made by our practitioners at THEWS!



THEWS is a **Mental Health Support Team** that offers help to children and young people attending schools within **the London borough of Tower Hamlets.**



### 🔍 How to get more information: ✕

- **Follow us** if you'd like to keep seeing more of our posts
- Click the **link in our bio** to visit our webpage, which has more information about our service, including our referral forms and whether our service might be right for you/your child.



Email us at [elft.thews@nhs.net](mailto:elft.thews@nhs.net)

Call us on **0207 426 2375**

**THEWS, 18 Greatorex Street, London, E1 5NF**